

# Springsheds and Water Withdrawal Permits in the Suwannee River Basin

April 15, 2017

Thanks to John Quarterman, Suwannee Riverkeeper and WWALS for this map from the Florida Springs Institute showing the groundwater users. Note the big blue dots where White Springs used to be.

Comments by OSFR historian Jim Tatum.

-A river is like a life: once taken, it cannot be brought back-

---

.  
On April 02, 2017 at 08:08PM, jsq at [WWALS Watershed Coalition](#) published the following article:

This figure for Florida water withdrawal permits in the Suwannee River springsheds shows by far the largest blue dots for the biggest withdrawal permits in Hamilton County at the location of the [PCS Phosphate mine](#).

**Fig. 4: Principal springsheds (red lines) + consumptive use permits (dots sized by withdrawal rate), Florida portion of Suwannee River springshed.**

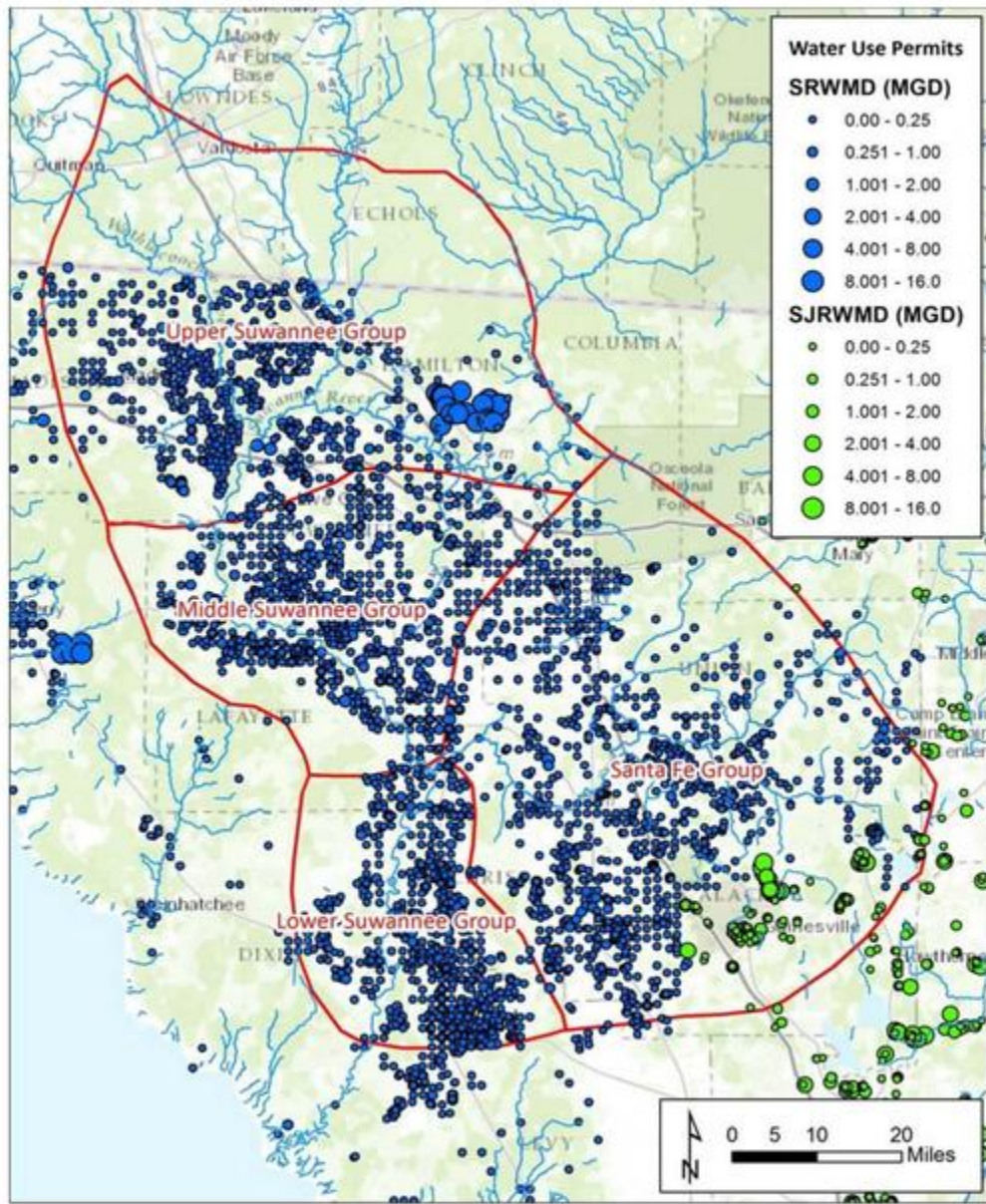


Figure 4. Principal springsheds (red lines) and consumptive use permits in the Florida portion of the entire Suwannee River springshed. The size of each dot is proportional to the permitted groundwater withdrawal rate. Blue dots are in the Suwannee River Water Management District and green dots are in the St. Johns River Water Management District.

Thanks to Cody Suggs for pointing out that figure. That figure and the other below that shows springsheds vs. watersheds are both from [A Plan to Restore the Lower Suwannee River Springs](#),

Howard T. Odum Florida Springs Institute, January 2016,  
which is an executive summary of [Lower Suwannee River Springs  
Restoration Plan](#),

Prepared by The Howard T. Odum Florida Springs Institute,  
October 2015.

**Fig. 1: Surface watershed and groundwater basins  
(springsheds) that feed the Suwannee River and  
springs.**



Figure 1. Surface watershed and groundwater basins (springsheds) that feed the Suwannee River and springs.

-jsq, John S. Quarterman, [Suwannee RIVERKEEPER®](#)

You can join this fun and work by [becoming a WWALS member today!](#)

Read this article at [WWALS Watershed Coalition](#) at

<http://www.wvals.net/2017/04/02/springsheds-and-water-withdrawal-permits-in-the-suwannee-river-basin/>.

Posted via [IFTTT](#)